

KONGO *across the* WATERS

OCTOBER 25, 2014–JANUARY 25, 2015

Intro

American artists

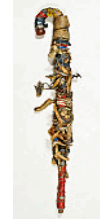
South Carolina

Conjurer's cane, 20th century

Various materials (wood, cloth, metal, plastic)

37 x 6.4 in (93.98 x 16.25 cm)

Tubman African American Museum



Woyo artists

Banana, Lower Congo, Democratic Republic of the Congo

Power figure (Nkisi Mandombe), early 20th century

Wood, gourd, vegetal fiber, shell, fruit, nut, pigment, resin, skin

ca. 14.96 x 18.9 x 17.71 in; Ca. 38 x 48 x 45 cm

Royal Museum for Central Africa, Tervuren, Belgium



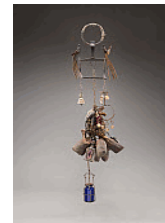
Renée Stout, American, born 1958

Self Portrait no. 2 [Self Portrait as Inkisi], 2008

Metal, fabric, glass and organic materials

32 x 7 x 7 in. (83.82 x 17.8 x 17.8 cm)

Collection of the artist



After Filippo Pigafetta, Italian, 1533 - 1604

Illustrated by Johann Theodor de Bry and Johann Israel de Bry, Frankfurt, Flemish, 1561–1623

Tabula Geogra Regni congo, from *Filippo pigafetta and Duarte Lopes's Regnum Congo. Hoc Est Vera Descriptio Regni Africani. Map of the Kongo Kingdom*, 1598

Ink on paper

11.9x 14.6 in, paper size 12.3x 15.1 in. (30.3 x 37.2 cm, Paper size 31.3 x 38.6 cm); Framed: 23 ¼ in. x 31 ¼ in.

Map and Image Library Coolelectin, George A. Smathers Libraries, University of Florida



Joan Blaeu, Dutch, 1596 - 1673

Regna Congo et Angola, Map of Kongo and Angola, 1662

Ink on paper

Map size: 17.8 x 20.9 in, paper size: 20.9 x 24.3 in. (45.2 cm x 53.2 cm, Paper size: 53.2 cm x 61.8 cm) Framed:

25 ¼ x 31 ¼ in.

Map and Imagery Library Collection, George A. Smathers Libraries, University of Florida,



Christianity: Swords

Kongo artist

Lower Congo, Democratic Republic of the Congo

Sword of honor, 16th–17th century

Wood, iron

35.5 x 5.3 x 1.25 in (90.1 x 13.5 x 3.2 cm)

Royal Museum for Central Africa, Tervuren, Belgium



Mboma artist
Matadi, Lower Congo, Democratic Republic of the Congo
Sword of honor, c. 16th-17th century
Iron
35.4 x 1.8in (90 x 4.5 cm)
Royal Museum for Central Africa, Tervuren, Belgium



Mboma artist
Matadi, Lower Congo, Democratic Republic of the Congo
Sword of honor, c. 16th-17th century
Iron, ivory
33.1 x 1.96 in (84 x 5 cm)
Royal Museum for Central Africa, Tervuren, Belgium



Christianity

Pieter Van der Aa, Dutch, 1659 - 1733
Dutch (Leiden,1659-1733)
Four Scenes of the Kongo Kingdom, from Galerie Agréable du Monde, 1725
Copperplate engraving
Plate size 19.3 x 14.8 in. (49 x 37.5 cm).; image size ca. 16.3 x 13.4 in. (41.5 x 34 cm.), Framed: 19 ¼ x 28 ¼ in.
Harn Museum of Art



Kongo artist
Lower Congo, Democratic Republic of the Congo
Religious medal and crucifix, 17th-18th century
Brass
2.48 x 1.46 in (6.3 x 3.7 cm)
Royal Museum for Central Africa, Tervuren, Belgium



Kongo artist
Lower Congo, Democratic Republic of the Congo
Religious medal, 18th century
Metal
1.97x 1.46 in (5 x 3.7 cm)
Royal Museum for Central Africa, Tervuren, Belgium

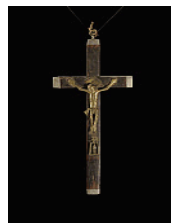


Christianity: Crucifix

Kongo artist
Democratic Republic of the Congo
Crucifix, 17th century
Wood, brass
17.7 x 10.6 x 2.36 in (45 x 27 x 6 cm)
Royal Museum for Central Africa, Tervuren, Belgium



Kongo artist
Lower Congo, Democratic Republic of the Congo
Crucifix, 18th century
Wood, copper alloy
15.35 x 6.6 x 0.8 in (39 x 16.7 x 2 cm)
Royal Museum for Central Africa, Tervuren, Belgium



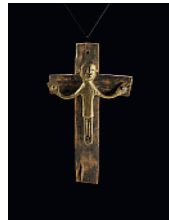
Kongo artist
Lower Congo, Democratic Republic of the Congo
Crucifix, 18th century
Wood, copper alloy
15.5 x 9.25 x 1.26 in (39.5 x 23.5 x 3.2 cm)
Royal Museum for Central Africa, Tervuren, Belgium



Kongo artist
Lower Congo, Democratic Republic of the Congo
Crucifix, 18th-19th century
Metal
20.5 in x 7.5 x 1.97 in (52 x 19 x 5 cm)
Royal Museum for Central Africa, Tervuren, Belgium



Kongo artist
Lower Congo, Democratic Republic of the Congo
Crucifix, 19th century
Wood, brass
7.87 x 4.13 x 1.18 in (20 x 10.5 x 3 cm)
Royal Museum for Central Africa, Tervuren, Belgium



Kongo artist
Lower Congo, Democratic Republic of the Congo
Corpus of a female figure, 19th century
Brass
6 x 6.5 x 1.38 in (15.3 x 16.5 x 3.5 cm)
Royal Museum for Central Africa, Tervuren, Belgium



Christianity: Finials

Kongo artist
Lower Congo, Democratic Republic of the Congo
Staff finial, 17th-18th century
Brass
9.88 x 4 in (25.1 x 10.2 cm)
Royal Museum for Central Africa, Tervuren, Belgium



Kongo artist
Lower Congo, Democratic Republic of the Congo
Staff finial, 17th-18th century
Brass, iron?
28 x 11.8 x 5.7 cm (11.02 x 4.65 x 2.2 in)
Royal Museum for Central Africa, Tervuren, Belgium

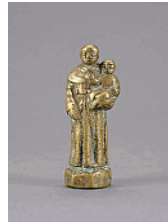


Christianity: Figurines

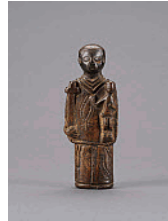
Kongo artist
Lower Congo, Democratic Republic of the Congo
Figure of Saint Anthony (Toni Malau), 17th-18th century
Copper alloy
4.53 x 1.38 in (11.5 x 3.5 cm)
Royal Museum for Central Africa, Tervuren, Belgium



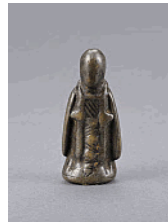
Kongo artist
Lower Congo, Democratic Republic of the Congo
Figure of Saint Anthony (Toni Malau), 18th-19th century
Copper alloy
10.5 x 4 x 3.5 cm (4.13 x 1.57 x 1.38 in)
Royal Museum for Central Africa, Tervuren, Belgium



Kongo artist
Lower Congo, Democratic Republic of the Congo
Figure of Saint Anthony (Toni Malau), 18th-19th century
Terracotta
4.92 x 1.77 x 0.98 in (12.5 x 4.5 x 2.5 cm)
Royal Museum for Central Africa, Tervuren, Belgium



Kongo artist
Lower Congo, Democratic Republic of the Congo
Figure of a missionary (priest?), 18th-19th century
Brass
5.2 x 2.2 x 1.3 cm (2.05 x .87 x 0.51 in)
Royal Museum for Central Africa, Tervuren, Belgium



Christianity

Solongo artist
Angola
Horn (mpungi), 18th-19th century
Ivory
41.1 x 4.1 x 5.9 in (104.5 x 10.5 x 15 cm)
Royal Museum for Central Africa, Tervuren, Belgium



Authority: Headdresses

Kongo artist
Lower Congo, Democratic Republic of the Congo
Prestige cap (mpu), late 19th century
Raffia, leopard claws
13.2 x 7.1 in (33.5 cm x 18 cm)
Royal Museum for Central Africa, Tervuren, Belgium



Kongo artist
Lower Congo, Democratic Republic of the Congo
Prestige cap (mpu), Early 20th century
Raffia
5.12 x 5.51 (13 x 14 cm)
Royal Museum for Central Africa, Tervuren, Belgium



Woyo artist
Cabinda province, Angola
Chief's cape, late 19th century
Vegetal fiber, raffia
54.5 x 75 x 3 cm (21.45 x 29.5 x 1.18 in)
Royal Museum for Central Africa, Tervuren, Belgium



Authority: Staffs

Authority: Staffs

Yombe artist
Mayombe, Lower Congo, Democratic Republic of the Congo
Staff (mwala), early 20th century
Wood
44.1 x 2.36 in. (112 x 6 cm)
Royal Museum for Central Africa, Tervuren, Belgium



Woyo artist
Lower Congo, Democratic Republic of the Congo
Staff (mwala), late 19th century
Wood
47.83x 1.38 in (121.5 x 3.5 cm)
Royal Museum for Central Africa, Tervuren, Belgium



Woyo artist
Lower Congo, Democratic Republic of the Congo
Staff (mwala), Early 20th century
Wood, metal
40.75 x 2.17 in (103.5 x 5.5 cm)
Royal Museum for Central Africa, Tervuren, Belgium



Kongo artist
Lower Congo, Democratic Republic of the Congo
Staff finial, late 19th century
Ivory
4.69 x 1.42 in (11.9 x 3.6 cm)
Royal Museum for Central Africa, Tervuren, Belgium



Authority

Yombe artist
Mayombe, Lower Congo, Democratic Republic of the Congo
Mother and child figure, late 19th or early 20th century
Wood, glass
(28.5 x 12.8 x 12 cm)
Royal Museum for Central Africa, Tervuren, Belgium



Kongo artist
Boma, Lower Congo, Democratic Republic of the Congo
Mat, early 20th century
Vegetal fiber
41.33 x 63.78 in.(105 x 162 cm)
Royal Museum for Central Africa, Tervuren, Belgium



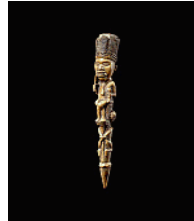
Vili artist
Loango, Republic of the Congo
Basket, late 19th century
Raffia and rattan
16.14 x 9.45 x 8.66 in (41 x 24 x 22 cm)
Royal Museum for Central Africa, Tervuren, Belgium



Vili artist
Loango, Republic of the Congo
Basket, late 19th century
Raffia and rattan
12 x 12.4 in (30.5 x 31.5 cm)
Royal Museum for Central Africa, Tervuren, Belgium



Kongo artist
Lower Congo, Democratic Republic of the Congo
Scepter, 19th century
Ivory, resin, fat
11.42 x 1.77 in (29 x 4.5 cm)
Royal Museum for Central Africa, Tervuren, Belgium



Woyo artist
Lower Congo, Democratic Republic of the Congo
Scepter, 19th century
Ivory
13.98 x 1.97 x 2.95 in (35.5 x 5 x 7.5 cm)
Royal Museum for Central Africa, Tervuren, Belgium



Yombe artist
Boma, Lower Congo, Democratic Republic of the Congo
Flywhisk, Early 20th century
Wood, buffalo tail, brass
18.77 x 2.17 in (47.7 x 5.5 cm)
Royal Museum for Central Africa, Tervuren, Belgium



Yombe artist
Lower Congo, Democratic Republic of the Congo
Spoon, 20th century
Wood
5 x 1.875 x 1.5 in. (12.7 x 4.76 x 3.81 cm)
Collection of Hyatt and Cici Brown



Postcards
4 postcards



Minkisi

Yombe artist, attributed to the Master of Kasadi
Mayombe, Lower Congo, Democratic Republic of the Congo
Mask, late 19th or early 20th century
Wood, pigment, clay (kaolin)
9.45 x 7.48 x 5.51 in. (24 x 19 x 14 cm)
Royal Museum for Central Africa, Tervuren, Belgium



Yombe artist, attributed to the Master of Kasadi
Mayombe, Lower Congo, Democratic Republic of the Congo
Mask, late 19th or early 20th century
Wood, clay (kaolin), pigment, skin, fur
29 x 17.5 x 14 cm
Royal Museum for Central Africa, Tervuren, Belgium



Woyo artist
Banana, Lower Congo, Democratic Republic of the Congo
Mask (ndunga), early 20th century
Wood, pigment
18.5 x 12.2 x 9.06 in (47 x 31 x 23 cm)
Royal Museum for Central Africa, Tervuren, Belgium



Yombe artists
Mayombe, Lower Congo, Democratic Republic of the Congo
Power figure (Nkisi Nkondi Mangaaka), 19th century
Wood, shell, vegetal fiber, metal, pigment, glass
51.97 x 19.29 x 13.78 in. (132 x 49 x 35 cm)
Royal Museum for Central Africa, Tervuren, Belgium



Yombe artist
Lower Congo, Democratic Republic of the Congo
Double bell (kunda), early 20th century
Wood
8.27 x 2.68 x 1.97 in. (21 x 6.8 x 5 cm)
Royal Museum for Central Africa, Tervuren, Belgium



Kongo artist
Lower Congo, Democratic Republic of the Congo
Whistle (nsiba), early 20th century
Wood, resin, vegetal fibers
7.7 x 1.18 x 1.97 in. (17 x 3 x 5 cm)
Royal Museum for Central Africa, Tervuren, Belgium



Woyo artists
Lower Congo, Democratic Republic of the Congo
Whistle (nsiba), early 20th century
Wood, horn
6.5 x 1.97 in. 16.5 x 5 cm
Royal Museum for Central Africa, Tervuren, Belgium



Kongo artists
Lower Congo, Democratic Republic of the Congo
Whistle (nsiba), early 20th century
Wood, horn
7.68 x 1.18 x 1.77 in. (19.5 x 3 x 4.5 cm)
Royal Museum for Central Africa, Tervuren, Belgium



Kongo artists
Lower Congo, Democratic Republic of the Congo
Bell (dibu), early 20th century
Wood
7.87 x 5.51 x 4.33 in. (20 x 14 x 11 cm)
Royal Museum for Central Africa, Tervuren, Belgium



Yombe artist
Mayombe, Lower Congo, Democratic Republic of the Congo
Power figure (Nkisi Simbu), late 19th century
Wood, textile, brass tack
11.02 x 6.3 x 5.51 in. (28 x 16 x 14 cm)
Royal Museum for Central Africa, Tervuren, Belgium



Kongo artist
Banana, Lower Congo, Democratic Republic of the Congo
Power figure (nkisi nduda), early 20th century
Wood, glass, feathers, resin, iron
10.23 x 6.3 x 5.11 in. (26 x 16 x 13 cm)
Royal Museum for Central Africa, Tervuren, Belgium



Yombe artists
Lower Congo, Democratic Republic of the Congo
Power figure (nkisi), early 20th century
Wood, vegetal fiber, glass, iron
14.17 x 7.09 x 6.3 in. (36 x 18 x 16 cm); 19.69 in. (50 cm) total height
Royal Museum for Central Africa, Tervuren, Belgium



Yombe artists
Mayombe, Lower Congo, Democratic Republic of the Congo
Power figure (Nkisi Maziolo), early 20th century
Glass, vegetal fiber, glass, fruit, feather, textile
11.02 x 4.72 in. (28 x 12 cm)
Royal Museum for Central Africa, Tervuren, Belgium



Yombe artists
Mayombe, Lower Congo, Democratic Republic of the Congo
Power figure (Nkisi Manyangu), Late 19th century
Wood, iron, vegetal fiber, pigment, resin, glass
29.13 x 15.75 x 13.78 in. (74 x 40 x 35 cm)
Royal Museum for Central Africa, Tervuren, Belgium



Yombe artists
Mayombe, Lower Congo, Democratic Republic of the Congo
Power figure (Nkisi Manyangu), Late 19th century
Wood, vegetal fiber, clay, iron, fat, pigment, glass, resin
32.28 x 16.93 x 13.38 in. (82 x 43 x 34 cm)
Royal Museum for Central Africa, Tervuren, Belgium



Kongo artists
Boma, Lower Congo, Democratic Republic of the Congo
Power figure (nkisi nkondi), 19th century
Wood, cotton, iron, vegetal fiber, pigment, glass
45.28 x 17.72 x 13 in. (115 x 45 x 33 cm)
Royal Museum for Central Africa, Tervuren, Belgium



Slavery

Unknown
New Orleans, Louisiana
Jeweled rosary with two medals, 18th century
Metal, glass
approx.: 14 x 3 in. (35.7 x 7.6 cm)
State of Louisiana



New Orleans, Louisiana
Medallion, 18th century
Metal, glass
?
State of Louisiana



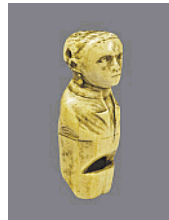
African American
Annapolis, Maryland
Conjurer's cache, Charles Carroll house excavation, 1790-1800
Pearlware [glazed white body ceramic with asterisk motif, stone, pins, quartz, bone disks
Collection of Charles Carroll House



Vili artist
Loango Coast, Lower Congo, Democratic Republic of the Congo
Tusk made into stamp, 19th century
Ivory, metal
19 x Ø 3,5 cm
Royal Museum for Central Africa, Tervuren, Belgium



Kongo artist
Loango Coast, Angola or Congo-Brazzaville
Sailing ship whistle, 18th-19th century
Ivory, wood
2.76 in (7 cm)
Collection of Marc Felix



Vili artist
Lower Congo, Democratic Republic of the Congo
Tusk, 19th century
Ivory
29.33 x 3.35 x 11.41 in (74.5 x 8.5 x 29 cm)
Royal Museum for Central Africa, Tervuren, Belgium



Vili artist
Loango, Republic of the Congo
Tusk, 19th century
Ivory
40.47 x 2.36 x 5.12 in (102.8 x 6 x 13 cm)
Royal Museum for Central Africa, Tervuren, Belgium



19th Century: Grave Objects

German ?
Collected in Lower Congo, Democratic Republic of the Congo
Pitcher, 1860s-1880s
Stoneware
16.54 x 9.65 x 8.07 in (43.5 x 24.5 x 20.5 cm)
Royal Museum for Central Africa, Tervuren, Belgium



German ?
Collected in Lower Congo, Democratic Republic of the Congo
Pitcher, 1860s-1880s
Stoneware
15.75 x diam: 10.04 in (42 x Ø 25.5 cm)
Royal Museum for Central Africa, Tervuren, Belgium



German or Dutch
Collected in Lower Congo, Democratic Republic of the Congo
Jenever bottle, Late 19th century
Glass
20 x 6.5 x 6.5 cm
Royal Museum for Central Africa, Tervuren, Belgium



European
Collected in Lower Congo, Democratic Republic of the Congo
Bowl, late 19th century
Stoneware
2.64 x 5 x 5.08 in (6.7 x 12.7 x 12.9 cm)
Royal Museum for Central Africa, Tervuren, Belgium



19th Century: Effigies

Mboma artist
Angola
Grave figure (ntadi), late 19th century
Steatite
16.54 x 10.63 x 3.15 in. (42 x 27 x 8 cm)
Royal Museum for Central Africa, Tervuren, Belgium



Mboma artist
Lower Congo, Democratic Republic of the Congo
Grave figure (ntadi), late 19th century
Steatite
14.96 x 8.46 x 3.74 in. (38 x 21.5 x 9.5 cm)
Royal Museum for Central Africa, Tervuren, Belgium



Yombe artist
Mayombe, Lower Congo, Democratic Republic of the Congo
Grave figure, early 20th century
Wood, pigment
22.24 x 9.1 x 7.1 in. (56.5 x 23 x 18 cm)
Royal Museum for Central Africa, Tervuren, Belgium



Yombe artist
Mayombe, Lower Congo, Democratic Republic of the Congo
Grave figure, early 20th century
Wood, pigment
24.8 x 7.1 x 9.84 in. (63 x 18 x 25 cm)
Royal Museum for Central Africa, Tervuren, Belgium



19th Century: Toby Jugs

British
Collected in Zaire province, Angola
Toby jug, 19th century
Stoneware
9.6 x 5.04 x 5.12 in (24.4 x 12.8 x 13 cm)
Royal Museum for Central Africa, Tervuren, Belgium



Kongo artist
Head after a Toby jug, 19th century
Terracotta
3.15 x 2.56 x 3.15 in (8 x 6.5 x 8 cm)
Royal Museum for Central Africa, Tervuren, Belgium



19th Century

Kongo artist
Luvituku, Lower Congo, Democratic Republic of the Congo
Mat, early 20th century
Vegetal fiber
44.1 x 60.63 in. (112 x 154 cm)
Royal Museum for Central Africa, Tervuren, Belgium



Kongo artist
Boma, Lower Congo, Democratic Republic of the Congo
Grave urn (diboondo), 19th century
Terracotta
19.7 in. (50 cm)
Collection of Marc Felix



19th Century: Grave Urns

Kongo artist
Boma, Lower Congo, Democratic Republic of the Congo
Grave urn (diboondo), 19th century
Terracotta
34.65 x 13.78 in. (88 x 35 cm)
Royal Museum for Central Africa, Tervuren, Belgium



19th Century: Wall Case

Mboma artist
Boma, Lower Congo, Democratic Republic of the Congo
Pendant, 19th century
Ivory
1.93 x 1.54 x 0.2 in (4.9 x 3.9 x 0.5 cm)
Royal Museum for Central Africa, Tervuren, Belgium



Solongo artist
Banana, Lower Congo, Democratic Republic of the Congo
Pendant, early 20th century
Ivory
1.97 x 1.85 x 0.39 in (5 x 4.7 x 1 cm)
Royal Museum for Central Africa, Tervuren, Belgium



Solongo artist
Boma, Lower Congo, Democratic Republic of the Congo
Pendant, early 20th century
Ivory
2 x 1.22 x 0.39 in(5.1 x 3.1 x 1 cm)
Royal Museum for Central Africa, Tervuren, Belgium



Kongo artist
Mayombe, Lower Congo, Democratic Republic of the Congo
Bracelet (nlunga), 19th century
Brass
1.18 x 4.25 in. (3 x 10.8 cm)
Royal Museum for Central Africa, Tervuren, Belgium



Yombe artist
Mayombe, Lower Congo, Democratic Republic of the Congo
Couple, late 19th century
Wood, shell, iron, pigment, clay
8.66 x 4.92 x 3.54 in. (22 x 12.5 x 9 cm)
Royal Museum for Central Africa, Tervuren, Belgium



Woyo artist
Lower Congo, Democratic Republic of the Congo
Pendant, early 20th century
Wood
0.63 x 1.81 in. (1.6 x 4.6 cm)
Royal Museum for Central Africa, Tervuren, Belgium



Woyo artist
Cabinda province, Angola
Pendant, Late 19th century
Ivory
1.97 x 1.97 x 0.59 in.(5 x 5 x 1.5 cm)
Royal Museum for Central Africa, Tervuren, Belgium



19th Century

19th Century

European

Collected in Lower Congo, Democratic Republic of the Congo

Ceremonial knife, late 19th century

Metal, silver

21.26 x 4.13 x 2.56 in (54 x 10.5 x 6.5 cm)

Royal Museum for Central Africa, Tervuren, Belgium



Woyo artist

Lower Congo, Democratic Republic of the Congo

Ceremonial knife (mbele a lulendo), Late 19th century

Metal, wood

42.5 x 8 x 4.5 cm (16.73 x 3.15 x 1.77 in)

Royal Museum for Central Africa, Tervuren, Belgium



probably French

Collected in Northern Angola

Helmet, 19th century

Metal

21 x 21.5 x 24 cm (8.27 x 8.46 x 9.45 in)

Royal Museum for Central Africa, Tervuren, Belgium



Kongo artist

Boma, Lower Congo, Democratic Republic of the Congo

Hat (kepi), early 20th century

Wood, pigment

9.06 x 7.5 x 10.24 in. (23 x 19 x 26 cm)

Royal Museum for Central Africa, Tervuren, Belgium



Kongo artist

Lower Congo, Democratic Republic of the Congo

Horn (mpungi), 19th century

Ivory

25.2 x 2.36 x 3.54 in.(64 x 6 x 9 cm)

Royal Museum for Central Africa, Tervuren, Belgium



African American Arts

Unknown

American artist

Georgia

Commemorative object for grave, 20th century

Wood, glass, paint, rose petals

9.5 x 6.75 x 13.5 in. (24.13 x 17.15 x 34.3 cm)

Private Collection



American artist

Memory jar, 20th century

Hand-built clay with encrusted shards and found objects

13 x 11 x 9 in. (33 x 27.9 x 22.9 cm)

High Museum of Art, Museum Purchase with funds from the Decorative Arts Acquisition Trust, 1997.37



American
Memory jar, early 20th century
Mixed media
12.5 in. Height (31.75 cm Height)
Collection of Renée Stout



African American Arts: Face Jars

American artist
Bath, Edgefield, South Carolina
Face vessel, mid-1800s
Alkaline-glazed stoneware
Estate of Mary Elizabeth Sinnott, Smithsonian Institution, National Museum of American History, Kenneth E. Behring Center



American artist
Edgefield, South Carolina
Face vessel, Mid-1800s
Stoneware
5.38 x 5.5 in. (13.6525 x 13.97 cm)
Marcus Benjamin Collection, Smithsonian Institution, National Museum of American History, Kenneth E. Behring Center



American artist
Edgefield District, South Carolina
Face vessel, mid 1800s
Stoneware with wood mount
overall: 9 in x 7 in. (22.86 cm x 17.78 cm)
The Eleanor and Mabel Van Alstyne Collection of American Folk Art, Smithsonian Institution, National Museum of American History, Kenneth E. Behring Center



African American Arts: Canes

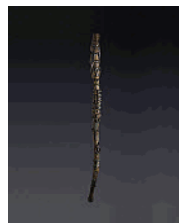
American artist
Cane, late 19th century
Wood
(35 in. Height, 1.25 in. Diam.) 88.9 x 3.2 cm Diam.)
Collection of George H. Meyer



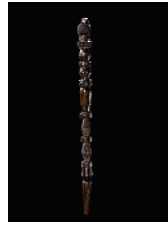
American artist
Cane, Early 20th century
Polychromed wood, steel ferrule, brass washer
(34.13 in Height, .75 in. Diam. (86.72 Height, 1.9 cm Diam.)
Collection of George H. Meyer



Lenard Megarr, American
Cane, 1932
Polychrome softwood, nail, glass, metal button
38 in x 2.63 in. x 2.25 in. (96.5 x 6.68 x 5.7 cm)
Collection of George H. Meyer



Arthur Pete Dilbert, American, born 1928
Cane, 1988
Carved and stained wood
38.25 x 4.5 x 2.31 in. (97.1 x 11.43 x 5.86 cm)
Smithsonian American Art Museum, Gift of James E. Allen



Henry Gudgell, American, 1826 - 1895
Cane, ca. 1867
Wood
Approx: 37 x 1.5 in. (94 x 3.8 cm)
Yale University Art Gallery



Woyo artist
Lower Congo, Democratic Republic of the Congo
Staff, late 19th century
Wood
44.3 x 2.56 in. (112.5 x 6.5 cm)
Royal Museum for Central Africa, Tervuren, Belgium



African American Arts: Baskets

Kongo artist
Lower Congo, Democratic Republic of the Congo
Basket, 20th century
Vegetal fiber
3.74 x 17.71 in. (9.5 x 45 cm)
Royal Museum for Central Africa, Tervuren, Belgium



Yombe artist
Mayombe, Lower Congo, Democratic Republic of the Congo
Basket, early 20th century
Vegetal fiber
6.7 x 11.8 x 6.88 in. (17 x 30 x 17.5 cm)
Royal Museum for Central Africa, Tervuren, Belgium



American artist
South Carolina
Fanner basket, Ca. 1900
Bulrush, white oak strips
21.25 in (54 cm) Diam.
Charleston Museum, South Carolina



Kongo artist
Banana, Lower Congo, Democratic Republic of the Congo
Basket, Early 20th century
Vegetal fiber
12.6 x 13.39 in. (32 x 34 cm)
Royal Museum for Central Africa, Tervuren, Belgium



Unknown
William Aiken-Rhett House, Charleston, South Carolina
Basket, ca. 1875
Sweetgrass, palmetto
2.5 x 5 in. (6.35 x 12.7 cm)
Charleston Museum, Charleston South Carolina

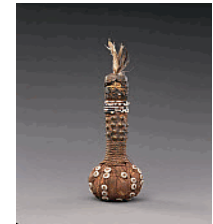


Elizabeth F. Kinlaw, American
In and Out Basket, 2012
Bulrush, sweetgrass, pineneedle, palmetto
12.5 x 12.5 x 11 in (31.75 x 31.75 x 27.94 cm)
Samuel P Harn Museum of Art



African American Arts: Vodou

Yombe artist
Mayombe, Lower Congo, Democratic Republic of the Congo
Power object (Nkisi Mbumba Mbondo), early 20th century
Vegetal fiber, metal, beads, feathers
10.63 x 3.15 in. (27 x 8 cm)
Royal Museum for Central Africa, Tervuren, Belgium



Unknown artist
Haiti or Florida
Bottle for Vodou spirit (Damballah), 2012
Cloth, glass, unidentified substances
14 x 3.63 in (35.56 x 9.2 cm)
Samuel P Harn Museum of Art Collection, Gift of Robin Poynor



Unknown artist
Haiti or Florida
Vodou packet for Damballah (paket Kongo), 2012
Cloth, glass, feathers, unidentified substances
8 ¼ x 3 7/8 in (20.95 x 9.84 cm)
Collection of Robin Poynor



Music

Kongo artist
Lower Congo, Democratic Republic of the Congo
Drum, Late 19th century
Wood, leather, pigment
43.3 x 15.75 in. (110 x 40 cm)
Royal Museum for Central Africa, Tervuren, Belgium



Kongo artist
Lower Congo, Democratic Republic of the Congo
Horn, late 19th century
Root, leather
36.61 x 5.59 in. (93 x 14.2 cm)
Royal Museum for Central Africa, Tervuren, Belgium



Solongo artist
Lower Congo, Democratic Republic of the Congo
Lamellophone (sanza), early 20th century
Wood, bead, iron
6.69 x 3.74 x 1.97 in. (17 x 9.5 x 5 cm)
Royal Museum for Central Africa, Tervuren, Belgium

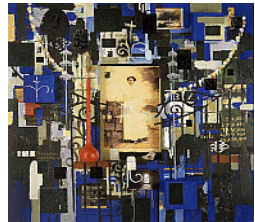


Yombe artist
Mayombe, Lower Congo, Democratic Republic of the Congo
Double bell (ngongi), Early 20th century
Iron, vegetal fiber
10.63 x 9.25 x 2.76 in. (27 x 23.5 x 7 cm)
Royal Museum for Central Africa, Tervuren, Belgium



Contemporary

Radcliffe Bailey, American, born 1968
By the River, 1997
Mixed media on wood
80 x 80 x 8 in. (203.2 x 203.2 x 20.3 cm).
Blanton Museum of Art, University of Texas, Austin



Renée Stout, American, born 1958
Master of the Universe, 2011-12
Found objects, organic materials, rhinestones, glass beads, mirror
48 x 18 x 18 in. (121.9 x 45.7 x 45.7 cm)
Collection of the artist and courtesy Hemphill Fine Arts



Yombe artist
Mayombe, Lower Congo, Democratic Republic of the Congo
Basket (Nkisi Mambuku Mongo), late 19th century
Wood, shell, vegetal fiber, seed, nut, stone, feather
6.3 x 14.96 x 8.66 in. (16 x 38 x 22 cm)
Royal Museum for Central Africa, Tervuren, Belgium

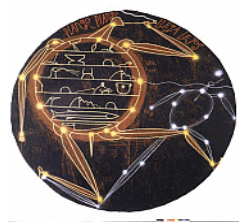


Steve Bandoma, Congolese, born 1981
Acculturation
Watercolor, ink and paper collage
30 x 41.5 in (75 x 105 cm); Framed:51"h x 39"l x 3 1/2"d
Samuel P Harn Museum of Art



Contemporary: Marquand Mather

José Bedia, Cuban, born 1959
Piango Piango Llega Lejos (Step by Step You Can Go Far), 2000
Acrylic stain and oil pastel on canvas
96.63 in Diam. (245.43 cm. Diam.)
Ackland Art Museum, University of North Carolina at Chapel Hill, Ackland Fund



Edouard Duval-Carrié, Haitian, active in Miami, born 1954

La Traversée, 1996

Oil on canvas in artist's frame

95 x 64.96 in. (241.5 x 165 cm)

Bass Museum of Art, gift of Sanford A. Rubenstein

