

Painting on Paper

American Watercolors at Princeton

Unknown American

View of Hudson from the West, ca. 1800–1815

Watercolor and pen and black ink on cream wove paper

24.5 x 34.6 cm. (9 5/8 x 13 5/8 in.)

Princeton University Art Museum. Gift of Edward Duff Balken, Class of 1897 (x1958-44)



Unknown American

Figures in a Garden, ca. 1830

Pen and black ink, watercolor and gouache on beige wove paper

47.3 x 60.3 cm. (18 5/8 x 23 3/4 in.)

frame: 51 x 64.6 x 3.5 cm (20 1/16 x 25 7/16 x 1 3/8 in.)

Princeton University Art Museum. Gift of Edward Duff Balken, Class of 1897 (x1958-45)



Unknown American

The Milkmaid, ca. 1840 – 1850

Watercolor on wove paper

27.9 x 22.9 cm (11 x 9 in.)

Princeton University Art Museum. Gift of Edward Duff Balken, Class of 1897 (x1958-49)



John James Audubon, American, 1785–1851

Yellow-throated Vireo, 1827

Watercolor over graphite on cream wove paper

mat: 48.7 x 36.2 cm (19 3/16 x 14 1/4 in.)

Graphic Arts Collection, Rare Books and Special Collections, Princeton University Library. Gift of John S. Williams, Class of 1924.



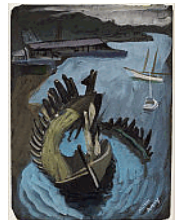
Milton Avery, American, 1893–1965

Harbor View with Shipwrecked Hull, 1927

Gouache on black wove paper

45.7 x 30.2 cm. (18 x 11 7/8 in.)

Princeton University Art Museum. Bequest of Edward T. Cone, Class of 1939, Professor of Music 1946-1985 (2005-102)



Robert Frederick Blum, American, 1857–1903

Chinese street scene, after 1890

Watercolor and gouache over graphite on cream wove paper

22.8 x 15.3 cm. (9 x 6 in.)

Princeton University Art Museum. Museum purchase (x1943-308)



Robert Frederick Blum, American, 1857–1903

That is Where All Babies Live in Japan, 1890–92

Watercolor on board

35.7 x 27.4 cm. (14 1/16 x 10 13/16 in.)

Princeton University Art Museum. Gift of Charles Scribner III, Class of 1973 and Graduate School Class of 1977 (x1993-163)



Alfred Thompson Bricher, American, 1837–1908

Woman Beside a River, 1880

Watercolor over graphite on cream wove paper

sight: 36.2 x 53.5 cm (14 1/4 x 21 1/16 in.)

frame: 62 x 78.5 x 3.5 cm (24 7/16 x 30 7/8 x 1 3/8 in.)

Princeton University Art Museum. Gift of Eugene B. Sydnor Jr., Class of 1939 (x1988-151)



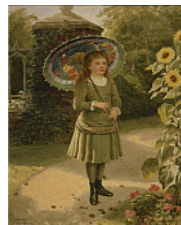
John George Brown, American, 1831–1913

Girl Holding a Parasol, early 1880s

Watercolor

34 x 24.8 cm (13 3/8 x 9 3/4 in.)

Lent by Elizabeth Feld Herzberg and Peter A. Feld, the children of Stuart P. Feld, Class of 1957, and Mrs. Feld



Charles Ephraim Burchfield, American, 1893–1967

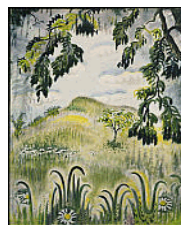
Summer Benediction, 1948

Watercolor on board

89 x 66 cm (35 1/16 x 26 in.)

frame: 104.5 x 80.5 x 1.5 cm (41 1/8 x 31 11/16 x 9/16 in.)

Princeton University Art Museum. Bequest of Sinclair Hamilton, Class of 1906 (x1978-96)



Charles Ephraim Burchfield, American, 1893–1967

December Fields, 1932

Brush and black ink, watercolor and gouache, with touches of white and black chalk over charcoal on cream wove paper

66 x 100.8 cm (26 x 39 11/16 in.)

frame: 90.6 x 125.2 x 5 cm (35 11/16 x 49 5/16 x 1 15/16 in.)

Princeton University Art Museum. Gift of John Sacret Young, Class of 1969 (2000-431)



Walter Harrison Cady, American, 1877–1970

In the Yellow Mountains, North Carolina, ca. 1932

Watercolor and pen and black ink over graphite on cream wove paper

36.2 x 44.8 cm (14 1/4 x 17 5/8 in.)

Princeton University Art Museum. Laura P. Hall Memorial Collection (x1946-151)



Alexander Calder, American, 1898–1976

The Two Arrows, 1966

Brush and black ink with watercolor and gouache on wove paper

74.8 x 107.8 cm (29 7/16 x 42 7/16 in.)

frame: 79 x 112 x 3.2 cm (31 1/8 x 44 1/8 x 1 1/4 in.)

Princeton University Art Museum. Gift of Franklin H. Kissner (x1966-63)



Nicolino Calyo, Italian, 1799 - 1884

New York and Brooklyn from Williamsburgh, 1838

Gouache

66 x 100 cm (26 x 39 3/8 in.)

Lent anonymously



George Catlin, American, 1796–1872

Niagara Falls in Anicartha Miller friendship album (alba amicorum), 1826-33, 1826-33

Watercolor

Manuscripts Collection, Rare Books and Special Collections, Princeton University Library. Purchase, 2011.



Glenn O. Coleman, American, 1887–1932
City Street, ca. 1927
Gouache on off-white wove paper
image: 31.5 x 43 cm. (12 3/8 x 16 15/16 in.)
sheet: 37 x 49.2 cm. (14 9/16 x 19 3/8 in.)
Princeton University Art Museum. Laura P. Hall Memorial Collection (x1946-172)



William Constable, British, 1783–1861
Mill at Parkman Town on the Headwater of Grand River Emptying into Lake Erie-New Connecticut State Ohio, 1806
Watercolor over graphite on cream laid paper
sheet: 22.6 x 24.7 cm (8 7/8 x 9 3/4 in.)
mat: 48.5 x 36 cm (19 1/8 x 14 3/16 in.)
Graphic Arts Collection, Rare Books and Special Collections, Princeton University Library. Gift of Leonard L. Milberg, Class of 1953.



Arthur Bowen Davies, American, 1862–1928
Château Langeais, Touraine, ca. 1924
Watercolor and gouache over graphite on olive-green laid paper
24.1 x 31.5 cm (9 1/2 x 12 3/8 in.)
Princeton University Art Museum. Bequest of Gilbert S. McClintock, Class of 1908 (x1959-9)



Arthur Bowen Davies, American, 1862–1928
The Riviera, ca. 1925
Gouache and blue crayon on blue laid paper
31.5 x 24 cm (12 3/8 x 9 7/16 in.)
mount: 38.3 x 30.3 cm. (15 1/16 x 11 15/16 in.)
Princeton University Art Museum. Gift of Remak Ramsay, Class of 1958 (1997-473)



Adolph Arthur Dehn, American, 1895–1968
Hurricane over Charleston, 1941
Watercolor and gouache over graphite on wove paper
39.8 x 58 cm. (15 11/16 x 22 13/16 in.)
Princeton University Art Museum. Gift of Thomas P. Baird, Class of 1945 (x1971-24)



Dorothy Dehner, American, 1901–1994
Suite Moderne, Fandango, 1947
Gouache and watercolor with pen and black ink on off-white wove paper
44.5 x 33 cm. (17 1/2 x 13 in.)
Princeton University Art Museum. Gift of the Dorothy Dehner Foundation for the Visual Arts (2003-232)



Charles Henry Demuth, American, 1883–1935
Trees, No. 2, 1916
Watercolor over graphite on cream wove paper
21.2 x 27.6 cm. (8 3/8 x 10 7/8 in.)
Princeton University Art Museum. Gift of Frank Jewett Mather Jr. (x1943-9)



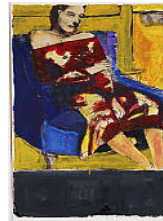
Richard Diebenkorn, American, 1922–1993

Seated Woman, 1964

Gouache on printed exhibition poster

56.6 x 36.5 cm. (22 5/16 x 14 3/8 in.)

Princeton University Art Museum. Gift of the Neidig family: Christy Neidig (daughter of Lorenz E A Eitner, Graduate Class of 1952) and William Neidig, Class of 1970, and Stephanie Neidig, Class of 2008 (2005-243)



Thomas Doughty, American, 1793–1856

The Hudson Highlands from West Point, 1839

Watercolor and graphite on cream wove paper

24.1 x 40.5 cm. (9 1/2 x 15 15/16 in.)

Princeton University Art Museum. Museum purchase, gift of Leonard Milberg, Class of 1953, in honor of his son-in-law, David H. Shapiro, Class of 1992 (1996-181)



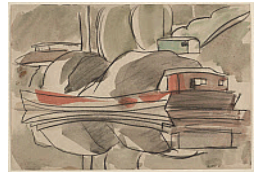
Arthur Dove, American, 1880–1946

Red Barge, 1931

Watercolor over black chalk on cream wove paper

21.6 x 27.9 cm. (8 1/2 x 11 in.)

Princeton University Art Museum. Gift of Frank Jewett Mather Jr. (x1944-568)



Arthur Dove, American, 1880–1946

Two Trees, 1937

watercolor

sheet: 12.7 x 17.7 cm

Overall: 5 x 7 in. (12.7 x 17.8 cm)

Lent anonymously



Thomas Eakins, American, 1844–1916

Seventy Years Ago, 1877

Watercolor and gouache on cream wove paper

39.8 x 27.4 cm. (15 11/16 x 10 13/16 in.)

Princeton University Art Museum. Gift of Mrs. Frank Jewett Mather Jr. (x1957-118)



Seth Eastman, American, 1808–1875

View of the Hudson River from Crow's Nest Mountain, ca. 1833–40

Watercolor, gouache and graphite on cream wove paper

12.1 x 23.1 cm. (4 3/4 x 9 1/8 in.)

Princeton University Art Museum. Museum purchase, gift of Leonard L. Milberg, Class of 1953, in honor of Sandra L. Milberg, Class of 1992 (x1992-252)



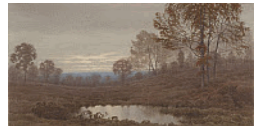
Henry Farrer, American, 1844–1903

Sunset Landscape with Pond, 1886

Watercolor and black chalk on cream wove paper

20.3 x 35.6 cm (8 x 14 in.)

Princeton University Art Museum. Museum purchase, gift of Leonard L. Milberg, Class of 1953 (x1988-109)



Thomas Charles Farrer, English, 1839–1891

Three Eggs, ca. 1865

Watercolor

12.7 x 25.4 cm (5 x 10 in.)

Lent by Elizabeth Feld Herzberg and Peter A. Feld, the children of Stuart P. Feld, Class of 1957, and Mrs. Feld



Sam Francis, American, 1923–1994
Untitled, 1958
Gouache on paper
sheet: 101.5 x 67.5 cm (39 15/16 x 26 9/16 in.)
frame: 123 x 89.5 x 5 cm
Lent by the Schorr Family Collection



Walter Gay, American, 1856 - 1937
La Cheminée (11 rue de l'Université, Paris), by 1908
Watercolor and gouache on paper
36.8 x 27.6 cm (14 1/2 x 10 7/8 in.)
Collection of Remak Ramsay, Class of 1958



William Glackens, American, 1870–1938
The Portate Ultimatum, 1899
Gouache on board
34.4 x 46 cm (13 9/16 x 18 1/8 in.)
Graphic Arts Collection, Rare Books and Special Collections, Princeton University Library. Gift of Charles Scribner III, Class of 1973.



James S. Glennie, Scottish, active 1810–11
Views of Kensington and Weehaw Plantations, 1811
Watercolor and pen and ink on cream wove journal paper
closed: 37 x 26 cm (14 9/16 x 10 1/4 in.)
Manuscripts Collection, Rare Books and Special Collections, Princeton University Library. Gift of Andre de Coppet, Class of 1915.



Adolph Gottlieb, American, 1903–1974
Untitled, 1946
Gouache (and tempera?) on paper
sight: 65 x 48.5 cm (25 9/16 x 19 1/8 in.)
frame: 83 x 66.5 x 3 cm
Lent by the Schorr Family Collection



Morris Graves, American, 1910–2001
Antelope, ca. 1930–39
Gouache on wove paper
35 x 46.5 cm. (13 3/4 x 18 5/16 in.)
Princeton University Art Museum. Gift of Patrick J. Kelleher, Graduate School Class of 1947, and Mrs. Kelleher (x1965-71)



William Gropper, American, 1897–1977
Prisoner and Four Riflemen, ca. 1937
Gouache, wash, and charcoal on cream laid paper
32.4 x 49 cm (12 3/4 x 19 5/16 in.)
Princeton University Art Museum. Laura P. Hall Memorial Collection (x1946-252)



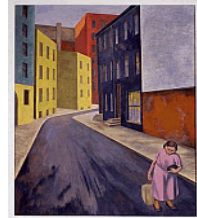
O. Louis Guglielmi, American, 1906–1956

Minetta Street, 1958

Gouache

57.1 × 45.7 cm (22 1/2 × 18 in.)

Collection of Jason Schoen



Childe Hassam, American, 1859–1935

Newfields, New Hampshire, 1917

Watercolor over graphite on cream wove paper

25.2 × 35.2 cm. (9 15/16 × 13 7/8 in.)

Princeton University Art Museum. Gift of the American Academy and Institute of Arts and Letters (x1944-566)



John William Hill, American, 1812–1879

Cucumbers, ca. 1860

Watercolor on cream wove paper

18.9 × 31.7 cm. (7 7/16 × 12 1/2 in.)

Princeton University Art Museum. Museum purchase, Laura P. Hall Memorial Fund (x1991-73)



John William Hill, American, 1812–1879

Broadway Looking South from Liberty Street, 1831

Watercolor

image: 42.9 × 61.4 cm (16 7/8 × 24 3/16 in.)

sheet: 44 × 62.7 cm (17 5/16 × 24 11/16 in.)

Lent anonymously



Winslow Homer, American, 1836–1910

The Trysting Place, 1875

Watercolor and gouache over traces of pastel and graphite on cream wove paper

30.5 × 20.5 cm. (12 × 8 1/16 in.)

Princeton University Library, Department of Rare Books and Special Collections, Division of Graphic Arts. Gift of the Estate of Laurence Hutton in 1913



Winslow Homer, American, 1836–1910

Eastern Point Light, 1880

Watercolor over graphite on cream wove paper

24.6 × 34.1 cm. (9 11/16 × 13 7/16 in.)

Princeton University Art Museum. Gift of Alastair B. Martin, Class of 1938 (x1957-116)



Edward Hopper, American, 1882–1967

Lime Rock Railroad, 1926

Watercolor and gouache over graphite on cream wove paper

35.5 × 50.7 cm. (14 × 19 15/16 in.)

frame: 62.2 × 77.5 cm. (24 1/2 × 30 1/2 in.)

Princeton University Art Museum. Laura P. Hall Memorial Collection (x1946-266)



Edward Hopper, American, 1882–1967

Trawler and Telegraph Pole, 1926

Watercolor and gouache over graphite on cream wove paper

35.3 × 50.5 cm. (13 7/8 × 19 7/8 in.)

frame: 62.2 × 77.5 cm. (24 1/2 × 30 1/2 in.)

Princeton University Art Museum. Laura P. Hall Memorial Collection (x1946-267)



Edward Hopper, American, 1882–1967
Universalist Church, 1926
Watercolor and gouache over graphite on cream wove paper
35.6 x 50.8 cm. (14 x 20 in.)
Princeton University Art Museum. Laura P. Hall Memorial Collection (x1946-268)



Bill Jensen, American, born 1945
Study for "Kepler", 1984–85
Gouache and watercolor on paper
69 x 101 cm (27 3/16 x 39 3/4 in.)
frame: 102 x 133.4 x 4.3 cm (40 3/16 x 52 1/2 x 1 11/16 in.)
Princeton University Art Museum. Gift of Stephanie H. Bernheim (2010-243)



August Kollner
Washington's Crossing on the Delaware River, 1844
Watercolor on cream wove paper
36 x 50.7 cm (14 3/16 x 19 15/16 in.)
Graphic Arts Collection, Rare Books and Special Collections, Princeton University Library.



John La Farge, American, 1835–1910
South Sea Dance, Samoa, 1890
Gouache and watercolor on tan wove paper
26.5 x 39.2 cm. (10 7/16 x 15 7/16 in.)
mount: 31 x 41.7 cm. (12 3/16 x 16 7/16 in.)
Princeton University Art Museum. Gift of Frank Jewett Mather Jr. (x1948-1798)



John La Farge, American, 1835–1910
Study of Afterglow from Nature (Tahiti: Entrance to Tautira Valley), 1891
Watercolor and gouache with graphite and black colored pencil on cream wove paper
21.2 x 33.2 cm. (8 3/8 x 13 1/16 in.)
Princeton University Art Museum. Museum purchase, gift of Leonard L. Milberg, Class of 1953 (x1988-108)



John H.B. Latrobe, American, 1803 - 1891
Pass of the James River Two Miles below Balcony Falls, 1832
Watercolor on cream wove paper
sheet: 19.2 x 26 cm (7 9/16 x 10 1/4 in.)
mat: 36.2 x 48.8 cm (14 1/4 x 19 3/16 in.)
Graphic Arts Collection, Rare Books and Special Collections, Princeton University Library. Gift of Leonard L. Milberg, Class of 1953.



Jacob Lawrence, American, 1917–2000
The Workshop, 1978
Gouache
70.8 x 50.8 cm (27 7/8 x 20 in.)
Collection of Jason Schoen



John Marin, American, 1870–1953
Lobster Smack Passing Through; Verso: Fragmentary sketch, 1923
Watercolor and black chalk with traces of blue pastel on cream wove paper (recto); watercolor and black chalk (verso)
34 x 42.5 cm (13 3/8 x 16 3/4 in.)
frame: 57 x 65.5 x 2.8 cm (22 7/16 x 25 13/16 x 1 1/8 in.)
Princeton University Art Museum. Gift of Frank Jewett Mather Jr. (x1941-157)



Reginald Marsh, American, 1898–1954
Brooklyn Bridge, 1927
Watercolor over graphite on cream laid paper
35.5 x 50.7 cm. (14 x 19 15/16 in.)
Princeton University Art Museum. Gift of Mrs. Thomas G. Cook (x1968-138)



Edward Melcarth, American, 1914–1973
The Surveyor
Gouache on wove paper
55.9 x 38.1 cm (22 x 15 in.)
Princeton University Art Museum. Given by his family in memory of Malcolm S. Forbes, Class of 1941 (2014-102)



Alfred Jacob Miller, American, 1810–1874
An Indian Guide, ca. 1838
Watercolor and gouache with pen and brown ink over graphite on cream wove paper
sheet: 20.5 x 25 cm (8 1/16 x 9 13/16 in.)
mat: 32 x 44.5 cm (12 5/8 x 17 1/2 in.)
Graphic Arts Collection, Rare Books and Special Collections, Princeton University Library. Gift of William Pinkney Carton, Class of 1943.



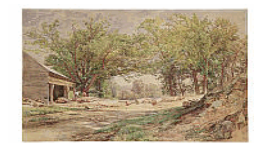
Charles Herbert Moore, American, 1840–1930
Snow Squall, 1865–66
Watercolor and touches of graphite on cream wove paper
14.3 x 22.7 cm. (5 5/8 x 8 15/16 in.)
Princeton University Art Museum. Gift of Miss Elizabeth Huntington Moore, the artist's daughter, presented by Mrs. Frank Jewett Mather Jr. (x1955-68)



Charles Herbert Moore, American, 1840–1930
Mount Washington, 1872
Watercolor and touches of graphite on cream wove paper
16 x 23 cm (6 5/16 x 9 1/16 in.)
Princeton University Art Museum. Gift of Miss Elizabeth Huntington Moore, the artist's daughter, presented by Mrs. Frank Jewett Mather Jr. (x1955-69)



Charles Herbert Moore, American, 1840–1930
Sawmill at West Boxford, 1874
Watercolor and touches of gouache over graphite on cream wove paper
30.2 x 45.7 cm. (11 7/8 x 18 in.)
Princeton University Art Museum. Gift of Miss Elizabeth Huntington Moore, the artist's daughter, presented by Mrs. Frank Jewett Mather Jr. (x1955-70)



Charles Herbert Moore, American, 1840–1930
Iris, ca. 1872
Watercolor over touches of graphite on cream wove paper
20.9 x 18.2 cm. (8 1/4 x 7 3/16 in.)
Princeton University Art Museum. Gift of Miss Harriet Dyer Adams (x1994-77)



Charles Herbert Moore, American, 1840–1930

Iris, 1871

Watercolor on cream wove paper

image: 27.9 × 13.3 cm (11 × 5 1/4 in.)

sheet: 31.4 × 18.3 cm (12 3/8 × 7 3/16 in.)

Lent anonymously



Thomas Moran, American, 1837–1926

Venice: The Lagoon Looking toward Santa Maria della Salute, 1894

Watercolor and gouache over graphite on cream laid paper

27.3 × 41.2 cm. (10 3/4 × 16 1/4 in.)

Princeton University Art Museum. Gift of Mrs. Philip T. White (x1969-370)



Henry Roderick Newman, American, 1843 - 1917

Anemones and Daffodils, 1876–1887

Watercolor

43.2 × 27.9 cm (17 × 11 in.)

Lent by Elizabeth Feld Herzberg, daughter of Stuart P. Feld, Class of 1957, and Mrs. Feld



Claes Oldenburg, American, born Stockholm, 1929

Blueberry Pie à la Mode, Tipped Up, and Spilling, 1996

Crayon and watercolor on white wove paper

41.0 × 26.8 cm. (16 1/8 × 10 9/16 in.)

Princeton University Art Museum. Museum purchase, Kathleen Compton Sherrerd Fund for Acquisitions in American Art (2004-264)



Joseph Pennell, American, 1857–1926

Rose Clouds, ca. 1922–26

Gouache and watercolor on gray wove paper

27 × 33 cm. (10 5/8 × 13 in.)

Princeton University Art Museum. Gift of David H. McAlpin, Class of 1920, and Mrs. McAlpin, in memory of Professor Clifton R. Hall (x1969-177)



Joseph Pennell, American, 1857–1926

From Cortland Street Ferry, 1908

Watercolor over graphite on cream wove paper

20 × 15.4 cm. (7 7/8 × 6 1/16 in.)

Princeton University Art Museum. Gift of David B. Long (2011-124)



Maurice Brazil Prendergast, American, 1858–1924

New England Shore; Verso: Graphite sketch of harbor scene with houses, 1917–1919

Watercolor and touches of white gouache over graphite with traces of black chalk and pastel on cream wove paper

28.6 × 40.1 cm. (11 1/4 × 15 13/16 in.)

Princeton University Art Museum. Gift of Mrs. Eugénie Prendergast (x1985-47)



Maurice Brazil Prendergast, American, 1858–1924
Sea and Boats, ca. 1907
Watercolor on paper
34.2 x 50.2 cm (13 7/16 x 19 3/4 in.)
Lent by the Henry and Rose Pearlman Foundation



William Trost Richards, American, 1833–1905
Near the Inlet, Atlantic City, 1873
Watercolor and gouache with traces of graphite and selective scraping on wove paper
22.2 x 35 cm. (8 3/4 x 13 3/4 in.)
Princeton University Art Museum. Museum purchase, gift of Leonard L. Milberg, Class of 1953, in honor of David J. Milberg, Class of 1985 (x1994-38)



Archibald Robertson, American, 1765 - 1835
Rose Hill, 1815
Watercolor
30.6 x 37.8 cm (12 1/16 x 14 7/8 in.)
Lent by Stuart P. Feld, Class of 1957, and Mrs. Feld



Theodore Robinson, American, 1852–1896
Under Green Apple Boughs, 1880
Watercolor over graphite on cream wove paper
16.7 x 35.6 cm. (6 9/16 x 14 in.)
Princeton University Art Museum. Gift of Frank Jewett Mather Jr. (x1948-1813)



Judith Rothschild, American, 1921–1993
Untitled, ca. 1946
Gouache, brush and black ink, collage, and graphite on board
24.5 x 24 cm. (9 5/8 x 9 7/16 in.)
Princeton University Art Museum. Museum purchase, Kathleen Compton Sherrerd Fund for Acquisitions in American Art (2002-217)



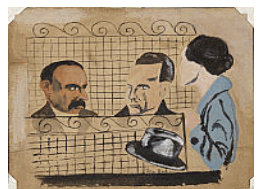
John Singer Sargent, American, 1856–1925
Mountain Scene, 1908
Watercolor and gouache over graphite on cream wove paper
25.4 x 35.6 cm. (10 x 14 in.)
Princeton University Art Museum. Museum purchase, Kathleen Compton Sherrerd Fund for Acquisitions in American Art (2003-83)



John Singer Sargent, American, 1856–1925
Girgenti, 1901
Watercolor over graphite on cream wove paper
31.1 x 46.4 cm (12 1/4 x 18 1/4 in.)
Collection of Remak Ramsay, Class of 1958



Ben Shahn, American, 1898–1969
Sacco and Vanzetti: In the Courtroom Cage, 1931–32
Watercolor and gouache and pen and black ink on buff wove paper
21.5 x 25.7 cm. (8 7/16 x 10 1/8 in.)
Princeton University Art Museum. Gift of Dr. Walter E. Rothman (x1965-69)



Mary Hibbs Snyder, American, 1811–1844
Spring; Shuttlecock and Marbles from a Book of Poems for Her Children, 1841–44
Watercolor and pen and black ink on cream wove paper
each page: 16.1 x 10.9 cm. (6 5/16 x 4 5/16 in.)
Princeton University Art Museum. Gift of Frank Jewett Mather Jr. (x1944-571)



Mary Hibbs Snyder, American, 1811–1844
Just Look at Her Garden; Little Henry He Learned from a Book of Poems for Her Children, 1841 – 1844
Watercolor and pen and ink on cream wove paper
each page: 16.5 x 10.4 cm (6 1/2 x 4 1/8 in.)
Princeton University Art Museum. Gift of Frank Jewett Mather Jr. (x1944-572)



Sally Ann Sprague, American, 1799–1837
Flora, 1808
Watercolor, silk and metallic threads on silk
38 x 30.5 cm. (14 15/16 x 12 in.)
Princeton University Art Museum. Gift of Edward Duff Balken, Class of 1897 (y1958-61)



Deborah Smith Taber, American, 1796–1879
Mehitable Eddy Taber, 1830
Watercolor on wove paper
49.5 x 38 cm (19 1/2 x 14 15/16 in.)
Princeton University Art Museum. Gift of Edward Duff Balken, Class of 1897 (x1958-86)



possibly Mary B. Tucker, active ca. 1840 - 1850
Girl in Calico; Verso: Contour sketch of same subject, ca. 1840 – 1850
Watercolor, brush and brown ink, and graphite on cream wove paper; verso: brush and brown ink over graphite
61.3 x 48 cm. (24 1/8 x 18 7/8 in.)
Princeton University Art Museum. Gift of Edward Duff Balken, Class of 1897 (x1958-50)



Abraham Walkowitz, American, 1878–1965
Crowd of Men and Women, 1908
Watercolor and pen and black ink over graphite on cream wove paper
31.5 x 20.3 cm. (12 3/8 x 8 in.)
Princeton University Art Museum. Gift of the artist (x1947-46)



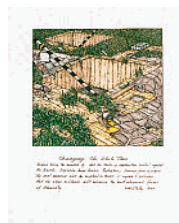
Julian Alden Weir, American, 1852–1919
Two Women Sewing, ca. 1885
Watercolor over graphite on cream wove paper
25.4 x 35.3 cm. (10 x 13 7/8 in.)
Princeton University Art Museum. Gift of Frank Jewett Mather Jr. (x1944-549)



Stow Wengenroth, American, 1906–1978
Maine Coastal Scene, 1978
Watercolor on paper
frame: 52.1 × 66.4 cm (20 1/2 × 26 1/8 in.)
Private Collection



William T. Wiley, American, born 1937
Changing the Whole Time, 1969
Watercolor, ink on paper
76.2 × 55.9 cm (30 × 22 in.)
Private Collection



Andrew Wyeth, American, 1917– 2009
Maine Woods, 1944
Watercolor and graphite on cream wove paper
54.5 x 75.9 cm. (21 7/16 x 29 7/8 in.)
frame: 83.2 × 102.9 cm (32 3/4 × 40 1/2 in.)
Princeton University Art Museum. Gift of the American Academy of Arts and Letters (x1948-1834)

