

Time Capsule, 1970: Rauschenberg's Currents

Princeton University Art Museum, Feb 2, 2019 – Feb 10, 2019

Robert Rauschenberg, American, 1925–2008

Surface Series from Currents #37, 1970

Screenprint

image: 89 × 89 cm (35 1/16 × 35 1/16 in.)

sheet: 101.5 × 101.6 cm (39 15/16 × 40 in.)

frame: 102.6 × 102.6 × 4.4 cm (40 3/8 × 40 3/8 × 1 3/4 in.)

Gift of Arthur A. Goldberg

x1983-111 a



Robert Rauschenberg, American, 1925–2008

Surface Series from Currents #38, 1970

Screenprint

image: 89 × 89 cm (35 1/16 × 35 1/16 in.)

sheet: 101.5 × 101.6 cm (39 15/16 × 40 in.)

frame: 102.6 × 102.6 × 4.4 cm (40 3/8 × 40 3/8 × 1 3/4 in.)

Gift of Arthur A. Goldberg

x1983-111 b



Robert Rauschenberg, American, 1925–2008

Surface Series from Currents #39, 1970

Screenprint

image: 89 × 89 cm (35 1/16 × 35 1/16 in.)

sheet: 101.5 × 101.6 cm (39 15/16 × 40 in.)

frame: 102.6 × 102.6 × 4.4 cm (40 3/8 × 40 3/8 × 1 3/4 in.)

Gift of Arthur A. Goldberg

x1983-111 c



Robert Rauschenberg, American, 1925–2008

Surface Series from Currents #40, 1970

Screenprint

image: 89 × 89 cm (35 1/16 × 35 1/16 in.)

sheet: 101.5 × 101.6 cm (39 15/16 × 40 in.)

frame: 102.6 × 102.6 × 4.4 cm (40 3/8 × 40 3/8 × 1 3/4 in.)

Gift of Arthur A. Goldberg

x1983-111 d



Robert Rauschenberg, American, 1925–2008
Surface Series from Currents #41, 1970
Screenprint
image: 89 × 89 cm (35 1/16 × 35 1/16 in.)
sheet: 101.5 × 101.6 cm (39 15/16 × 40 in.)
frame: 102.6 × 102.6 × 4.4 cm (40 3/8 × 40 3/8 × 1 3/4 in.)
Gift of Arthur A. Goldberg
x1983-111 e



Robert Rauschenberg, American, 1925–2008
Surface Series from Currents #42, 1970
Screenprint
image: 89 × 89 cm (35 1/16 × 35 1/16 in.)
sheet: 101.5 × 101.6 cm (39 15/16 × 40 in.)
frame: 102.6 × 102.6 × 4.4 cm (40 3/8 × 40 3/8 × 1 3/4 in.)
Gift of Arthur A. Goldberg
x1983-111 f



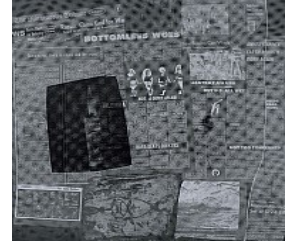
Robert Rauschenberg, American, 1925–2008
Surface Series from Currents #43, 1970
Screenprint
image: 89 × 89 cm (35 1/16 × 35 1/16 in.)
sheet: 101.5 × 101.6 cm (39 15/16 × 40 in.)
frame: 102.6 × 102.6 × 4.4 cm (40 3/8 × 40 3/8 × 1 3/4 in.)
Gift of Arthur A. Goldberg
x1983-111 g



Robert Rauschenberg, American, 1925–2008
Surface Series from Currents #44, 1970
Screenprint
image: 89 × 89 cm (35 1/16 × 35 1/16 in.)
sheet: 101.5 × 101.6 cm (39 15/16 × 40 in.)
frame: 102.6 × 102.6 × 4.4 cm (40 3/8 × 40 3/8 × 1 3/4 in.)
Gift of Arthur A. Goldberg
x1983-111 h



Robert Rauschenberg, American, 1925–2008
Surface Series from Currents #45, 1970
Screenprint
image: 89 × 89 cm (35 1/16 × 35 1/16 in.)
sheet: 101.5 × 101.6 cm (39 15/16 × 40 in.)
frame: 102.6 × 102.6 × 4.4 cm (40 3/8 × 40 3/8 × 1 3/4 in.)
Gift of Arthur A. Goldberg
x1983-111 i



Robert Rauschenberg, American, 1925–2008
Surface Series from Currents #46, 1970
Screenprint
image: 89 × 89 cm (35 1/16 × 35 1/16 in.)
sheet: 101.5 × 101.6 cm (39 15/16 × 40 in.)
frame: 102.6 × 102.6 × 4.4 cm (40 3/8 × 40 3/8 × 1 3/4 in.)
Gift of Arthur A. Goldberg
x1983-111 j



Robert Rauschenberg, American, 1925–2008
Surface Series from Currents #47, 1970
Screenprint
image: 89 × 89 cm (35 1/16 × 35 1/16 in.)
sheet: 101.5 × 101.6 cm (39 15/16 × 40 in.)
frame: 102.6 × 102.6 × 4.4 cm (40 3/8 × 40 3/8 × 1 3/4 in.)
Gift of Arthur A. Goldberg
x1983-111 k



Robert Rauschenberg, American, 1925–2008
Surface Series from Currents #48, 1970
Screenprint
image: 89 × 89 cm (35 1/16 × 35 1/16 in.)
sheet: 101.5 × 101.6 cm (39 15/16 × 40 in.)
frame: 102.6 × 102.6 × 4.4 cm (40 3/8 × 40 3/8 × 1 3/4 in.)
Gift of Arthur A. Goldberg
x1983-111 l



Robert Rauschenberg, American, 1925–2008
Surface Series from Currents #49, 1970
Screenprint
image: 89 × 89 cm (35 1/16 × 35 1/16 in.)
sheet: 101.5 × 101.6 cm (39 15/16 × 40 in.)
frame: 102.6 × 102.6 × 4.4 cm (40 3/8 × 40 3/8 × 1 3/4 in.)
Gift of Arthur A. Goldberg
x1983-111 m



Robert Rauschenberg, American, 1925–2008
Surface Series from Currents #50, 1970
Screenprint
image: 89 × 89 cm (35 1/16 × 35 1/16 in.)
sheet: 101.5 × 101.6 cm (39 15/16 × 40 in.)
frame: 102.6 × 102.6 × 4.4 cm (40 3/8 × 40 3/8 × 1 3/4 in.)
Gift of Arthur A. Goldberg
x1983-111 n



Robert Rauschenberg, American, 1925–2008
Surface Series from Currents #51, 1970
Screenprint
image: 89 × 89 cm (35 1/16 × 35 1/16 in.)
sheet: 101.5 × 101.6 cm (39 15/16 × 40 in.)
frame: 102.6 × 102.6 × 4.4 cm (40 3/8 × 40 3/8 × 1 3/4 in.)
Gift of Arthur A. Goldberg
x1983-111 o



Robert Rauschenberg, American, 1925–2008
Surface Series from Currents #52, 1970
Screenprint
image: 89 × 89 cm (35 1/16 × 35 1/16 in.)
sheet: 101.5 × 101.6 cm (39 15/16 × 40 in.)
frame: 102.6 × 102.6 × 4.4 cm (40 3/8 × 40 3/8 × 1 3/4 in.)
Gift of Arthur A. Goldberg
x1983-111 p



Robert Rauschenberg, American, 1925–2008
Surface Series from Currents #53, 1970
Screenprint
image: 89 × 89 cm (35 1/16 × 35 1/16 in.)
sheet: 101.5 × 101.6 cm (39 15/16 × 40 in.)
frame: 102.6 × 102.6 × 4.4 cm (40 3/8 × 40 3/8 × 1 3/4 in.)
Gift of Arthur A. Goldberg
x1983-111 q



Robert Rauschenberg, American, 1925–2008
Surface Series from Currents #54, 1970
Screenprint
image: 89 × 89 cm (35 1/16 × 35 1/16 in.)
sheet: 101.5 × 101.6 cm (39 15/16 × 40 in.)
frame: 102.6 × 102.6 × 4.4 cm (40 3/8 × 40 3/8 × 1 3/4 in.)
Gift of Arthur A. Goldberg
x1983-111 r



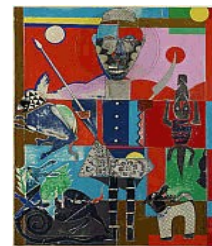
Robert Rauschenberg, American, 1925–2008
Currents, 1970
Book
Museum Collection
RRC-1



Robert Rauschenberg, American, 1925–2008
Printed by Kenneth Tyler at Gemini G.E.L., founded 1966
Published by Gemini G.E.L., founded 1966
Booster, 1967
Color lithograph and screenprint on Curtis Rag moldmade paper
182.9 x 90.2 cm. (72 x 35 1/2 in.)
frame: 191.4 × 99.3 × 3.7 cm (75 3/8 × 39 1/8 × 1 7/16 in.)
Museum purchase, Laura P. Hall Memorial Fund and Fowler McCormick, Class of 1921, Fund
in honor of John Wilmerding, Christopher B. Sarofim '86 Professor of American Art
2006-824



Romare Bearden, American, 1911–1988
Moon and Two Suns, 1971
Paper, cloth and plastic on masonite
61 x 46 cm (24 x 18 1/8 in.)
frame: 74 × 59 × 6.5 cm. (29 1/8 × 23 1/4 × 2 9/16 in.)
Gift of The American Academy and Institute of Arts and Letters, Childe Hassam Fund
y1972-1



Lee Friedlander, American, born 1934
New Orleans, 1969

Gelatin silver print

image: 20.5 x 30.7 cm (8 1/16 x 12 1/16 in.)

sheet: 27.9 x 35.4 cm (11 x 13 15/16 in.)

Gift of J. Michael Parish, Class of 1965, and Ellen Parish, on the occasion of the 250th
Anniversary of Princeton University

1997-53



Andy Warhol, American, 1928–1987

Electric Chairs, 1971

Screenprint

90 x 121.5 cm (35 7/16 x 47 13/16 in.)

frame: 96 x 127.5 x 3.6 cm (37 13/16 x 50 3/16 x 1 7/16 in.)

Gift of Paul F. Walter

x1977-148 h



compiled by Robert Rauschenberg, American, 1925–2008

Audio for Currents, 1970

Audio files

Duration approximately 3 hours

Courtesy the Robert Rauschenberg Foundation

RRC-2